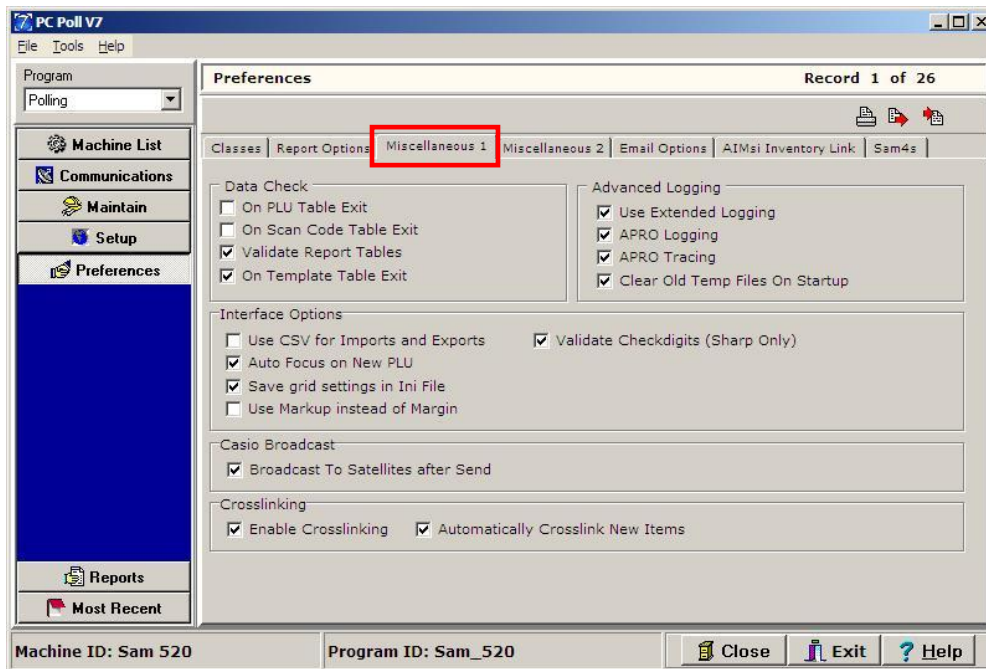
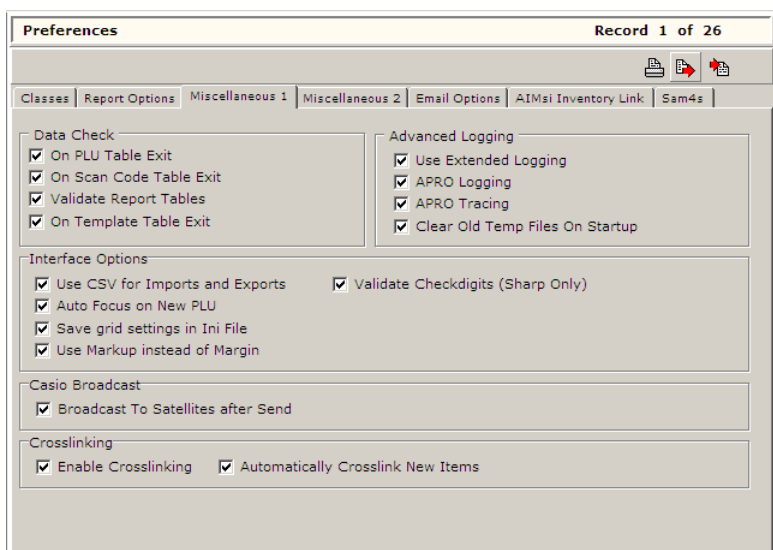


Preferences



When clicking on the **Preferences** menu option in the left menu, the software will open to the **Miscellaneous1** tab by default. The Preferences area allows users to customize the software to fit the needs of their particular installation. Make the desired selections and press the **Close** button to save those selections. For more information on a particular preference, please consult a cash register dealer.

Miscellaneous 1 Tab



Data Check section



On PLU Table Exit: With this option activated, the software will perform a verification check on the PLU/UPC/Scan PLU maintenance data. This check will be done every time the PLU maintenance area is exited and changes have been made to the file. If no changes have been made, then the check will not be conducted.

The check itself consists of two parts. The first is a data verify and the second is a duplicate item check.

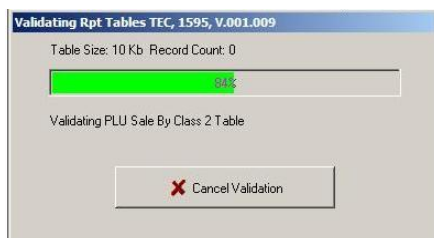
1. The data verify checks the database fields to see if any entered values are outside the required values as set by the cash register type.
2. The duplicate check goes through and verifies that each PLU item code is unique. If duplicates are found, the software will filter the database to display both the original item and the duplicate(s). Users should look at the items and decide which ones should be removed. After the errors have been corrected and duplicates removed, then re-run the Verify manually via the **Tools** menu at the top of the screen to make sure the file will send correctly to the cash register. Repeat this process until the file passes verification.

On Scan Code Table Exit: This option works the same as the **On PLU Table Exit**; however, this check is done on the Scan PLU program.

Validate Report Tables: With this option activated, the software will perform a comprehensive data check on the report tables each time the software is opened. The software will run through all used report tables and validate them, update/restructure them and repair them if needed. This process could take some time to process, especially if the report databases contain a great deal of data.



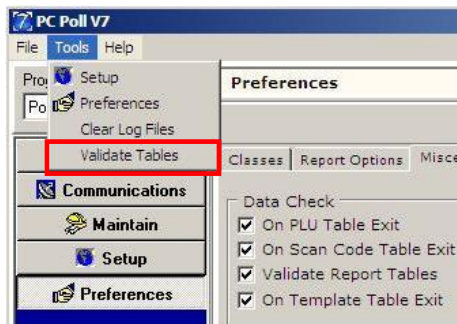
This option can be disabled; however, you will see the warning above. It is recommended to run this validate once a month, whenever there are reporting errors, and after updating the software to a newer version.



Once the validate process is started the screen above will open. The validation process can be cancelled by clicking on the **Cancel Validation** button.



If the process is cancelled, the screen above opens. However, the cancellation will occur only after the current report is done validating. Click **OK**. *Note: Please do **not** close the software while the validating is being conducted. Let the software process fully or cancel fully on its own*



Report validations can also be done via the **Tools** menu (in the red box) at the top of the software. This Tools Option Validate lets users select which reports to validate. The Preferences Validate checks all report tables. The Tools menu option can be used to repair an individual table more quickly.

On Template Code Table Exit: This option works the same as the **On PLU Table Exit**, however this check is done on the Template PLU program.

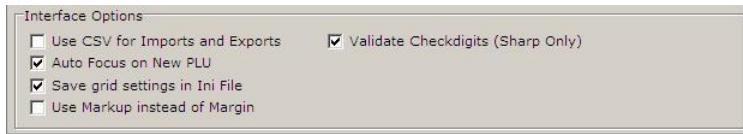
Advanced Logging section



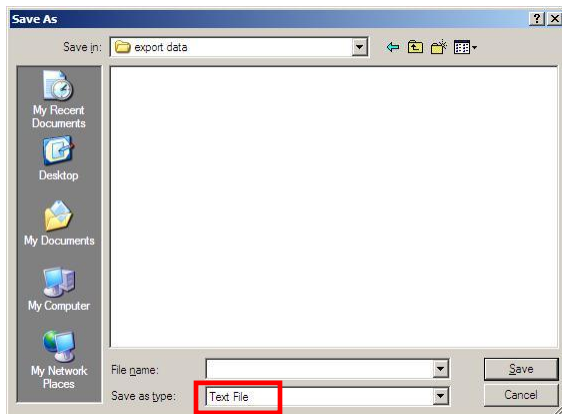
When communications problems occur, dealers or Tri-Technical Systems' support staff may ask for log files to help troubleshoot the errors. It is best to turn on all four logging options, as in the example above, and press the **Close** button to save your setting changes.

1. The first three options, **Use Extended Logging**, **APRO Logging**, and **APRO Tracing** will create log files in a Temp folder found in the same location as the V7Polling.exe file.
2. The last option, **Clear Old Temp Files On Startup**, will automatically delete log files that are over 1 week old, on opening of the polling software. This option helps keep the directory clean of unneeded files.

Interface Options section



Use CSV for Imports and Exports: With this option checked, when an export dialog box is opened within the software, the Save As type will default to *.csv files.

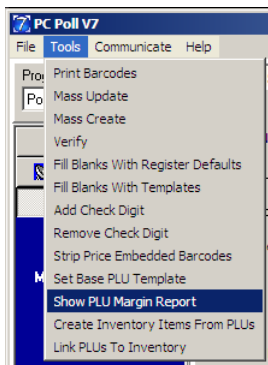


With it unchecked, the software will default to *.txt files.

Auto Focus On New PLU: This option is used when adding a new PLU or UPC to the software. With this option activated, the cursor will automatically jump to the PLU Code field on the detail area to allow for faster editing. With it disabled, the software cursor will remain within the currently selected grid column.

Save Grid Settings in INI File: Users can customize the field order, hide fields, and change the size of database entry areas within the Maintenance area grids. If it is desired to have those setting retained please check this preference. For faster loading times, please leave this option unchecked. The software will use default settings.

Use Markup instead of Margin: This option is used within the PLU/UPC/Scan PLU maintenance area. On the detail form V7 Polling displays the cash register's selling price. Users also have an option to manually enter a static cost, which will only be stored in the PC. With data in both of these fields, the software will calculate and display the margin or the markup.



This option also affects the PLU Margin report found within the PLU/UPC/Scan PLU maintenance area, which is found on the **Tools** menu at the top of the screen, then click on **Show PLU Margin Report**.

The screenshot shows a 'Print Preview' window titled 'PLU Markup Report'. The table displays the following data:

PLU Code	Description	Price	Cost	Markup
0		\$0.00	\$0.00	N/A
10	OPEN BEERs	\$4.00	\$2.20	81.82%
20	OPEN LIQUORs	\$2.00	\$0.00	N/A
30	OPEN WINE	\$0.00	\$0.00	N/A
1113	MAKERS MARK 750M	\$18.00	\$7.50	140.00%
1125	CHARTREUSE YELLO	\$9.00	\$0.00	N/A
1148	LEROUX STRAW. 75	\$9.00	\$0.00	N/A
1234	frozn tea strawb	\$2.75	\$0.75	266.67%
1235	frozn tea mango	\$2.75	\$0.75	266.67%
1236	frozn tea kiwi	\$2.75	\$0.75	266.67%
1237	frozn tea lime	\$2.75	\$0.75	266.67%
1238	frozn tea lemon	\$2.75	\$0.75	266.67%
1301	ABSOLUT CITRON 5	\$7.19	\$0.00	N/A
1333	FINLANDIA 50ML	\$8.09	\$0.00	N/A
1334	JACK DANIELS 50M	\$6.75	\$0.00	N/A
34555	frzn chi chooc	\$2.75	\$0.75	266.67%
34560	frzn chi straw	\$2.75	\$0.75	266.67%
34565	frzn chi bluebry	\$2.75	\$0.75	266.67%
34570	frzn chi lemon	\$2.75	\$0.75	266.67%
34575	frzn chi spioe	\$2.75	\$0.75	266.67%
34580	frzn chi melon	\$2.75	\$0.75	266.67%

If this is activated, the software will display the markup number instead of the margin number.

Example:

Selling Price: \$2.80

Cost: \$2.00

Margin

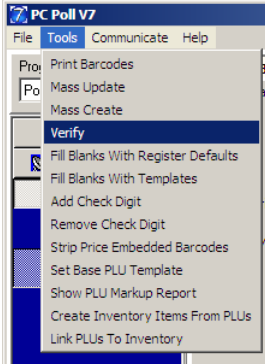
$$\% = (1 - (\text{cost}/\text{price})) * 100$$

Markup

$$\% = ((\text{price}/\text{cost}) - 1) * 100$$

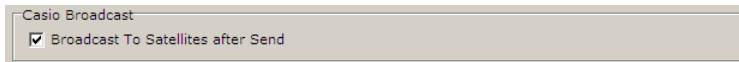
Markup: 40%

Margin: 28.57%



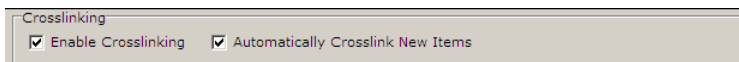
Validate Check Digits (Sharp Only): Within the PLU/UPC maintenance area there is a Tools option to verify the PLU database. The Sharp cash registers require check digits on most UPC codes. If desired the software can do a mathematical calculation to verify the check digit. Depending on how a scanner is programmed, check digits may or not be used on certain items and thus the Verify will deliver false error results. Please consult your cash register dealer for more information.

Casio Broadcast section

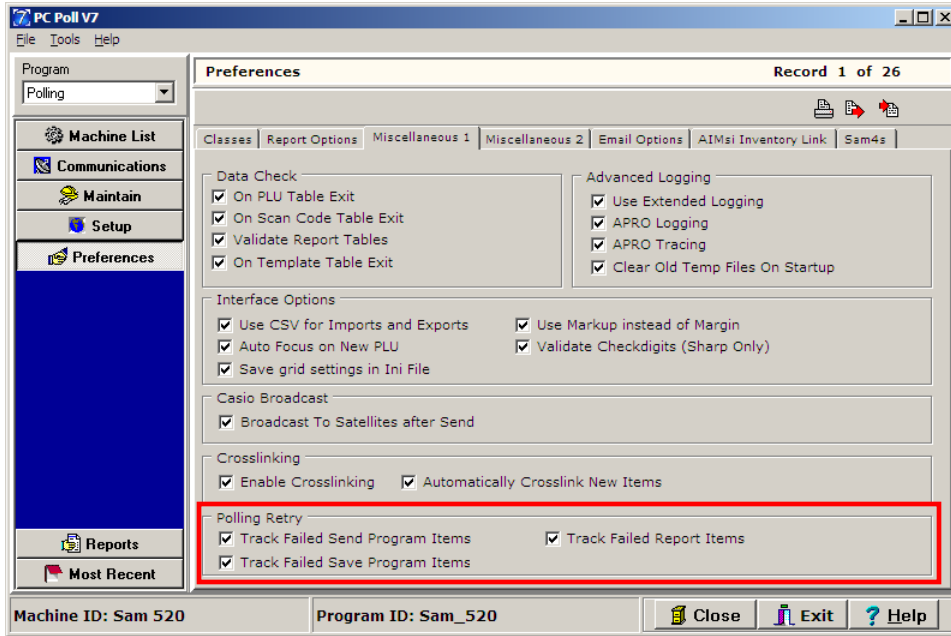


CASIO Broadcast: If a CASIO register is being used, customers have the option to have the software automatically broadcast programming changes to all registers within the system (IRC). Before attempted to broadcast, please make sure to have saved all programs from the register to the PC. The software will need to know the System Connection setup before attempting to broadcast. Also, note that broadcasting is not an option on a CASIO native TCP/IP WAN connection unless each register has its own external IP address. Please see a cash register dealer for more information.

Crosslinking section

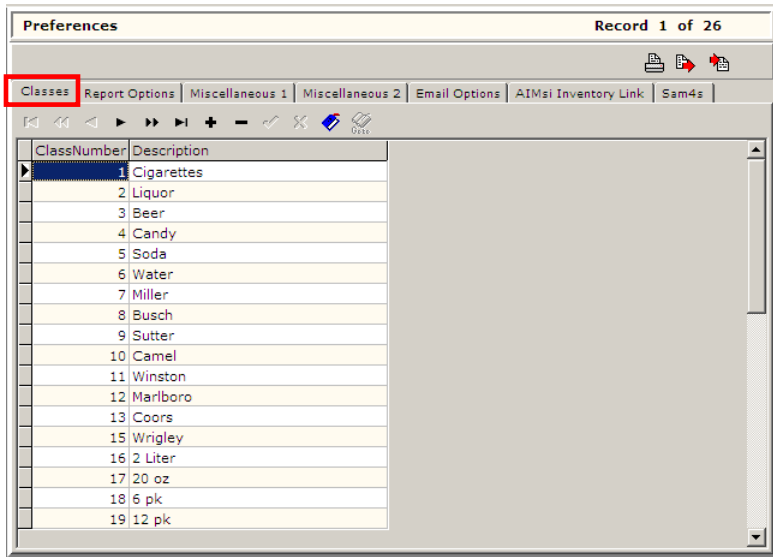


Crosslinking: The V7 Polling software support PLU item data sharing. Users can setup groups (crosslinks) of registers that are allowed to share item information. This can be done on a per record basis, so users could share item numbers 1-100 and 300-700 between a crosslink group. PLU/UPC/Template PLU, Group/Department, and PLU Status Group programs support this option. For more information, please see: Machine Crosslinks for V7.3.pdf



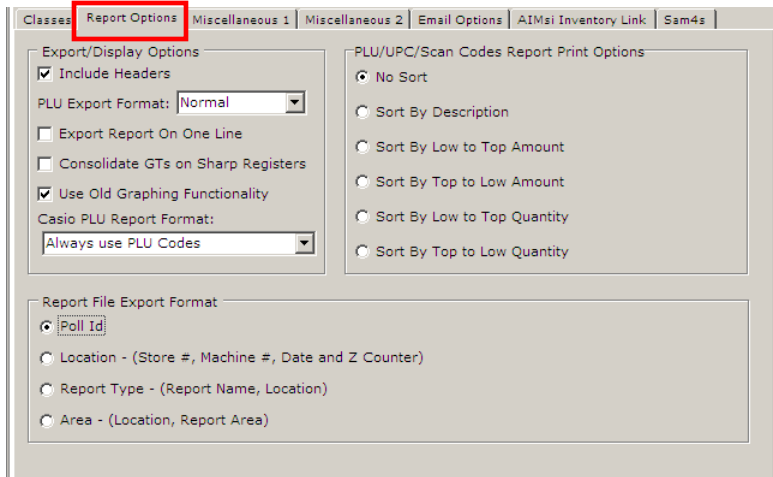
The Retry Polling program is installed with build V7.1.1.134 and higher. The section in the red box above has been added to the Preference screen. It allows for retries of failed Send Programs, Save Programs, and Report Items. The default location of the application is C:\PCPOLL SYSTEMS\V7. Please see the **Retry Polling** Help File document for help on this topic.

Classes Tab



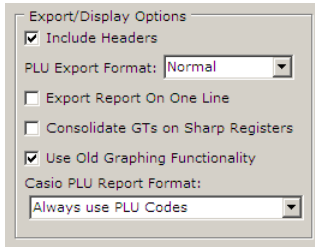
The Classes area within Preferences allows customers to create user-defined classes to be used within the PLU/UPC/Template PLU maintenance areas. These classes can be used for filtering, sorting, updating, and reporting on PLU/UPC/Template PLU data. For more information on classes, please see: [Advanced V7 Polling Options.pdf](#)

Report Options Tab



The Report Options Tab has three sections: Export/Display Options, PLU/UPC/Scan Codes Report Print options, and Report File Export Format.

Export/Display Option section



Include Headers: With this option checked all standard (not custom) report exports will contain report headers.

PLU Export Format: This option lets users select: Normal, Denview or CBORD. Most users will select Normal. The Denview export will export the PLU data in a format that can be easily imported onto Tri-Tech's DenView500 software for ingredient usage tabulations. The CBORD export will export the data in a format that can be used with certain versions of the CBORD software.

Export Report on One Line: This preference changes the way the data is broken up within an export. The data normally creates a new line for each database record. This option runs all the data together into 1 line. This is used by select software interfaces.

Consolidate GTs on Sharp Registers: This option affects the way the software will consolidate standard and advanced consolidated reports. With this option checked, the software will consolidate or sum the GT data on Sharp Transaction reports. With it unchecked, the last collected values will be displayed on the consolidated reports. In general, this option should only be used if the cash registers are setup to reset GT totals after a Transaction Z report or if multiple registers (IRCs) are being summed.

Use Old Graphing Functionality: With this option checked, users can revert to Version 7.2 Polling graphing options. For more information, please see: [report_area_graphical_display_feature.pdf](#).

CASIO PLU Report Format: This option only applies to users of CASIO registers. These users can select different display options for their PLU/Scan PLU reports.

Always use PLU Codes: This selection will always display PLU codes on the PLU reports, even if the items are scanning items.

Use Random Codes (If present): This selection will cross-reference the PLU maintenance file, look up the random code of an item, and display that number on the PLU report.

Use Linked Scan Codes (If Present): This selection will cross-reference the PLU maintenance file and look up the Linked Scan code of an item and display that number on the PLU report.

Use Best Fit: This selection will cross-reference the PLU maintenance file, look at the file to see if the item has a Linked Scan code or a Random code, and try to select the one in use to display on the PLU report.

PLU/UPC/Scan Codes Report Print Options section

These selection options will change the way the PLU reports are displayed. All of the data will remain in the report database in the same format. However, when the report is displayed or printed it can be sorted by the following options:

1. No Sort

2. Sort By Description (alphabetical sort)
3. Sort By Low to Top Amount (numeric sort)
4. Sort By Top to Low Amount (numeric sort)
5. Sort By Low to Top Quantity (numeric sort)
6. Sort By Top to Low Quantity (numeric sort)

Report File Export Format section

Users have a few different options on the format of their report file exports. This selection area applies to both manual report exports and automatic report exports conducted by Scripts. All of these options are relatively the same. The data is stored in a comma separated format either *.txt or *.csv. For more advanced options there is a custom export template creator found within the Reports section of the software.

Poll ID: The data is exported directly out of the database. The first field on each line is the Poll ID. The Poll ID is an auto-generated number that corresponds with the number of reports within the reporting section of the software.

Example:

```
PollId, PLUCode, Number, Description, DeptId, DeptName, Amount, Quantity
4480,1,16,J Daniels 175,1,Domestic Lqr,150,6
4480,2,18,Cptn Morgan 175,1,Domestic Lqr,192.5,5
```

Location: The location format contains all the data found within the Poll ID format, except the Poll ID number is replaced with the Store number, Machine Number, Date, and Z counter from the report.

Example:

```
StoreNumber,MachineNumber,ReportDate,ZCounter,PLUCode,Number,Description,DeptId,DeptName,Amount,Quantity
1,1,05/20/2010,0,1,16,J Daniels 175,1,Domestic Lqr,150,6
1,1,05/20/2010,0,2,18,Cptn Morgan 175,1,Domestic Lqr,192.5,5
```

Report Type: The report type format contains all the data found within the Location format, with the addition of the report name added to the beginning of each record.

Example:

```
ReportName,StoreNumber,MachineNumber,ReportDate,ZCounter,PLUCode,Number,Description,DeptId,DeptName,Amount,Quantity
PLU,1,1,05/20/2010,0,1,16,J Daniels 175,1,Domestic Lqr,150,6
PLU,1,1,05/20/2010,0,2,18,Cptn Morgan 175,1,Domestic Lqr,192.5,5
```

Area: The area format contains all the data found within the Location format, with the addition of the report area added to each record. For example, a daily X report would state Area 1, X within the exported data.

Example:

```
StoreNumber,MachineNumber,ReportDate,ZCounter,PollType,PolledArea,PLUCode,Number,Description,DeptId,DeptName,Amount,Quantity
1,1,05/20/2010,0,X,AREA 1,1,16,J Daniels 175,1,Domestic Lqr,150,6
1,1,05/20/2010,0,X,AREA 1,2,18,Cptn Morgan 175,1,Domestic Lqr,192.5,5
```

Miscellaneous 2 Tab

The screenshot shows the 'Miscellaneous 2' tab of the V7 Polling software configuration window. The window has a menu bar with 'Classes', 'Report Options', 'Miscellaneous 1', 'Miscellaneous 2', 'Email Options', 'AIMsi Inventory Link', and 'Sam4s'. The 'Main Screen Image' section has 'Show Image' and 'Use Custom Image for Main Screen' checked, with a file path 'als\PAR III Documents\In Progress\Basic Version 7 Polling Setup\dealer_logo.jpg' in the 'Location' field. The 'Barcoding' section has 'Use Default Location For Barcoding' selected, with 'C:\PCPoll Systems\V7\Barcoding.exe' in the 'Location' field. The 'Advanced Settings' section has a warning message and 'Enable Faster TEC Serial Communication' unchecked. The 'Modem Options' section has 'Initial Connection Retry Count' set to 3, 'Line Break Retry Count' set to 1, and 'Wait Time Between Redials' set to 60 seconds.

Main Screen Image section

This close-up screenshot shows the 'Main Screen Image' section of the configuration window. It features two checked checkboxes: 'Show Image' and 'Use Custom Image for Main Screen'. The 'Location' field contains the file path 'als\PAR III Documents\In Progress\Basic Version 7 Polling Setup\dealer_logo.jpg' and a browse button ('...').

The V7 Polling software allows users to customize the image displayed on the main screen. By default, there is an image of Dubuque, Iowa, the home of Tri-Technical Systems. For more information on changing this image, please see: [Basic Version 7 Polling Setup Instructions.pdf](#)

Barcoding section

This close-up screenshot shows the 'Barcoding' section of the configuration window. It has two radio buttons: 'Use Default Location For Barcoding' (selected) and 'Use Custom Location For Barcoding'. The 'Location' field contains 'C:\PCPoll Systems\V7\Barcoding.exe' and a browse button ('...').

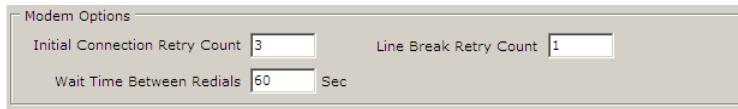
By default, V7 Polling installs the barcoding module in the same location as the V7Polling.exe file. The barcoding application can be moved for network installations. Simply chose to use the custom location and locate the file. When completed press the **Close**, not the **Cancel**, button to save the edits.

Advanced Settings section

This close-up screenshot shows the 'Advanced Settings' section of the configuration window. It features a warning message: 'WARNING: Changing these settings could have an adverse effect on the functionality of V7 Polling.' Below the warning is an unchecked checkbox labeled 'Enable Faster TEC Serial Communication'.

This option is for all registers. Users can select to enable a faster serial communications speed.

With this option checked, the software will process the data faster. *Note: Hardware connections can vary based upon the used device. Some USB and ether to serial convertors cannot handle the faster processing, requiring slower communication wait times and others prefer faster wait times. This is a limitation of the hardware.* Please fully test on your system prior to setting up automatic polling options. V7 Polling now offers both options. By default, the software will function with longer wait times. To use a shorter wait time, please enable the faster option.



Modem Options			
Initial Connection Retry Count	3	Line Break Retry Count	1
Wait Time Between Redials	60	Sec	

Modem Options section

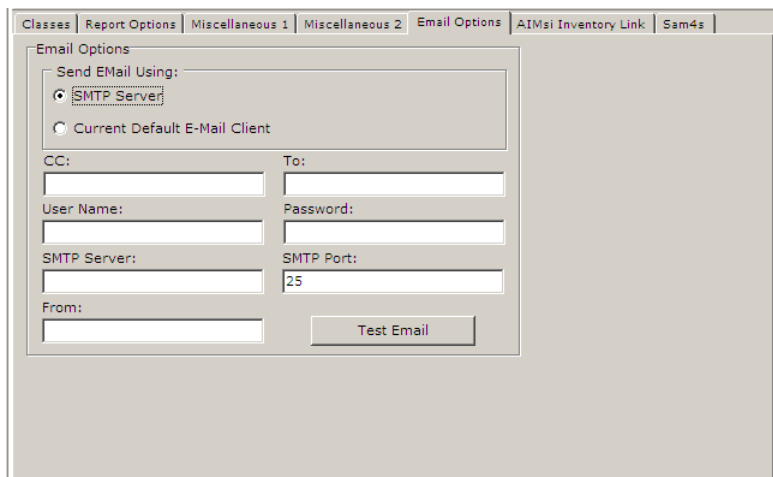
These options only apply to RS232 modem connections.

Retry Count: This is the number of initial attempts the software will make to connect to the cash register via modem.

Wait time between redials: Between each attempt the software will wait X number of seconds before retrying to connect to the register's modem.

Line Break Retry Count: Once the software is connected to the register an individual polling event may fail. This number is the number off attempts the software will make on an individual polling event within a series of events (script).

Email Options Tab



Classes		Report Options	Miscellaneous 1	Miscellaneous 2	Email Options	ATMsi Inventory Link	Sam4s
Email Options							
Send EMail Using:							
<input checked="" type="radio"/> SMTP Server							
<input type="radio"/> Current Default E-Mail Client							
CC:		To:					
User Name:		Password:					
SMTP Server:		SMTP Port:					
From:		25					
Test Email							

Email options can be used within the scripting area of the software to automatically email report data to desired email addresses. Below is some information on the setup that is required. Your IT professional or network administrator may need to give you the necessary information for this setup area.

SMTP Server: Using the SMTP server option allows V7 Polling send e-mail immediately from the software to the selected destination location. SMTP will create and send the e-mail immediately after the compressed file is created.

To find the computer's SMTP address users can either locate the information manually or contact their network administrator or Internet service provider. One of the simplest ways to locate the address manually is to look within the default e-mail client program. In order to use a program, such as Outlook, an SMTP had to have been entered at the time the software was installed and configured. For example, using Outlook 2000 users would open the software. Select **Tools**, then **Accounts**, select the appropriate email account, then **Properties**. Within **Properties**, there is a **Servers** tab and that displays a listing for Outgoing mail (SMTP): That SMTP address should be entered into V7 Polling. The address may be a number or it could be text.

Example SMTP addresses:

192.168.1.27
networkexpress.net

The SMTP option requires users to be connected before attempting to send e-mail messages. If an Internet connection cannot be guaranteed, users should choose the Default Client option. The default option will create an e-mail and turn it over to the client program to send when the computer is connected to the Internet.

Users with firewalls and proxy settings will need to verify that a direct SMTP address will work with their system. Please contact your network administrator if you have any questions on your computer configuration.

Current Default E-mail Client: Using the current E-mail client is an easy way to use Version 7 Polling's e-mailing functionality. This option requires the user to have an e-mail program such as MS Outlook or MS Outlook Express installed on the same computer as V7 Polling. When Polling creates an e-mail, it will open the user's default e-mail client/program and have that program send the e-mail message. When the e-mail is actually sent out of the system depends on the configuration of the client program. Users will need to check their settings to see if the client program sends immediately when connected, checks every x minutes, etc. Please consult the help files that are included with the client program for more information.

Another benefit of using the default client is that the e-mail program is designed to work with firewall and proxy settings. If the computer requires proxy settings or must go through a firewall to send e-mail messages, it is recommended that the Current Default Client option be selected.

Users should note that newer versions of default clients, such as the ones listed above, do have built-in security protection features that require the user to grant V7 Polling access to the e-mail program. These prompts must be clicked manually by the user. If auto e-mailing options are needed, users should select and configure the SMTP Server option detailed below or use a third party component to click yes to the prompt.

CC: Enter an email address to use for a carbon copy.

User Name: This field is required for an SMTP connection. It is the user name on the email account.

SMTP Server: This field is required for an SMTP connection. Please read the SMTP section above.

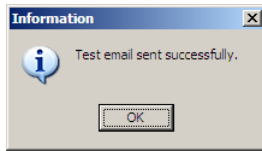
From: This field is required for an SMTP connection. Please enter the email address of the sender.

To: Enter an email address to send the email to.

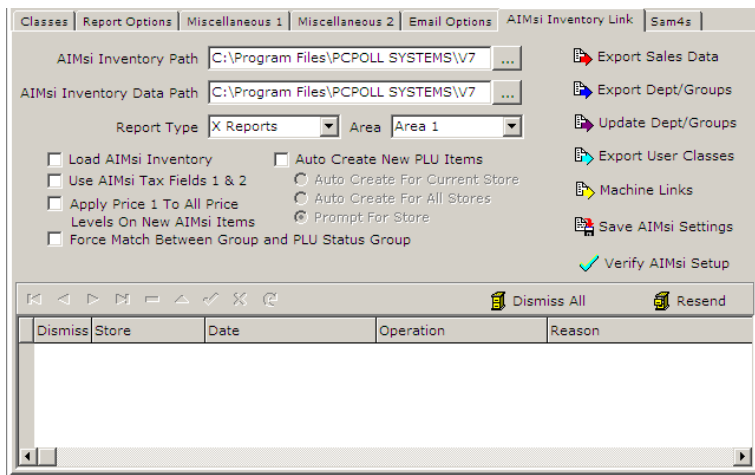
Password: This field is required for an SMTP connection. It is the password associated with the entered user name.

SMTP Port: This field is required for an SMTP connection. The most commonly used port is number 25. Certain email systems may use other port numbers.

Test Email: Press this button to test that all the email options are setup correctly.

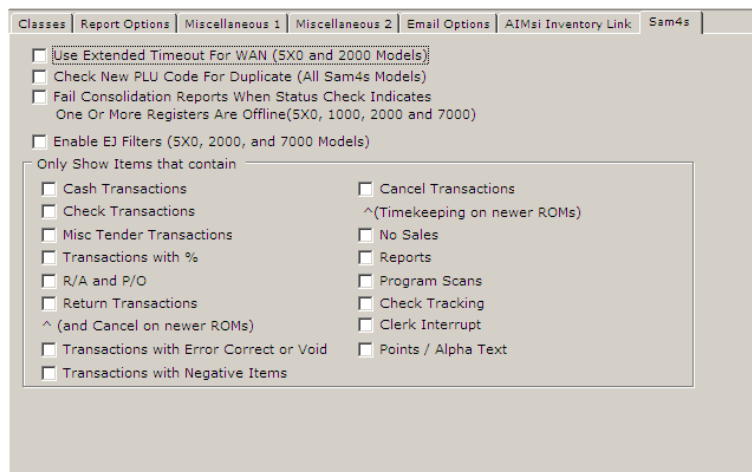


AIMsi Inventory Link Tab



This tab is used to link V7 Polling to V9 AIMsi inventory software. To purchase the inventory software, please consult a cash register dealer. Please see the Interface Setup.pdf for more detailed instructions on this setup.

Sam4s Tab



Use Extended Timeout For WAN (5x0 and 2000 Models): This option increases the number of time outs the software will wait before terminating the communications and disconnecting from the cash register via TCP/IP communications. Some Wide Area Network connections take longer to establish a connection.

Check New PLU Code For Duplicate (All Sam4s Models): With this option activated the software will check the PLU database to see if the desired PLU code is already being used. The software will then display a message letting the user know if that particular PLU code is already in use. The user will need to change the PLU code before posting the record.

Fail Consolidate Reports When Status Check Indications One or More Registers Are offline (5x0, 1000, 2000, and 7000): By checking this option the software will perform an extra check when conducting reports on some Sam4s registers. Before each report poll, the software checks to see if all registers within the requested IRC range are available. With this option activated, the software will run this check and if one of the selected registers is offline, the software will terminate that report poll and it will not attempt to collect the data from that report.

Enable EJ Filters (5x0, 2000 and 7000 Models): With this option enabled, the items within Only Show Items that Contain also become activated. These options work together to help a user filter their Electronic Journal report. When the EJ report is polled, the software will obtain all the report data. The user has the option to filter the report data to only view select types of items i.e. Cash Transactions only. With this option off the report will display all the collected data.