

# PC/Capture V2

PC/Capture is designed to allow a customer to have a real time feed of the events that are happening at an ECR. Note that since PC/Capture emulates a printer, the functionality of PC/Capture on a particular register is limited to that register's support for external printers.

We support the following registers for use with a direct connection or for use with modems:

CRS: 3000

Sam4s: 5x0, 2000, 7000, 1000, 52xx, 65x, 28x, and 390.

Casio: 6600, 6100, 6000, 8500, and 7000

Sharp: 3500, 330x, 8x0, 770, and 750. (We also support the 600/700, but due to a register limitation, we can only receive report data from them.)

In addition, we support native TCP/IP communication for the following registers:

Sam4s: 5x0 and 2000

Casio: 6600, 6100, and 6000

In addition, we support output from our own AIMsi point of sale software with a direct connection.

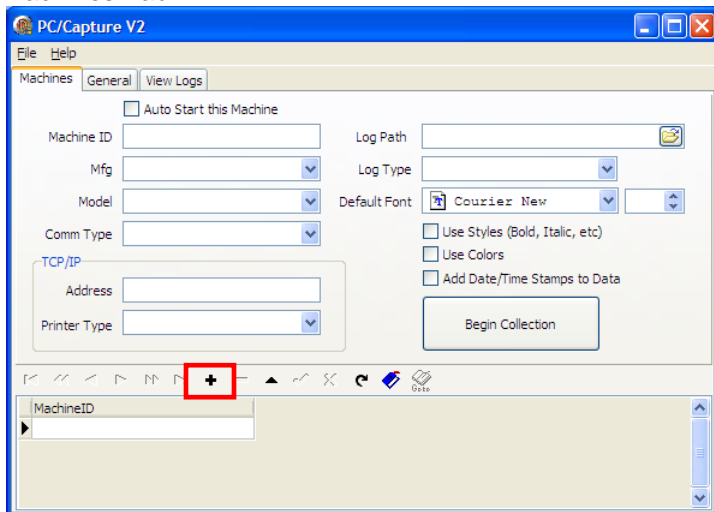
## General


PC/Capture minimizes to the taskbar when closed. To terminate the application, you must right click on the task bar icon and select terminate.

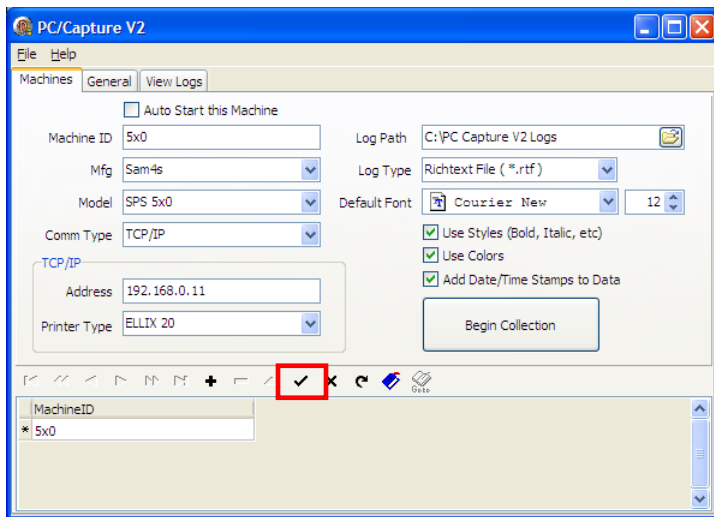
## Setup


1. Open PC/Capture V2 from the icon placed on the desktop during installation.

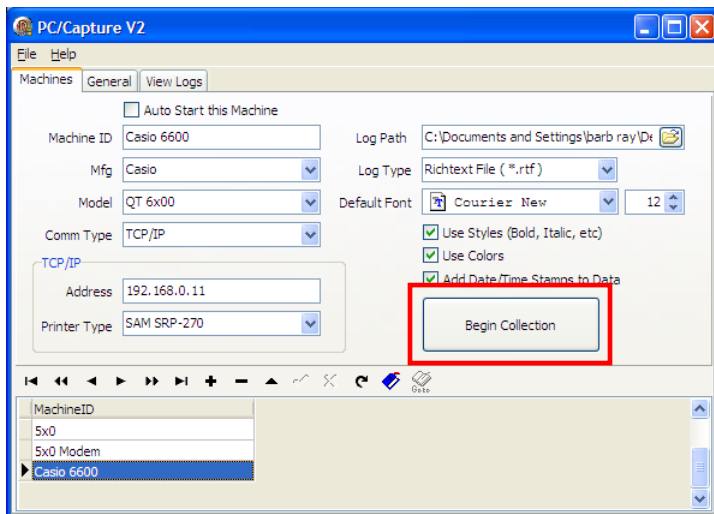
### Machines Tab




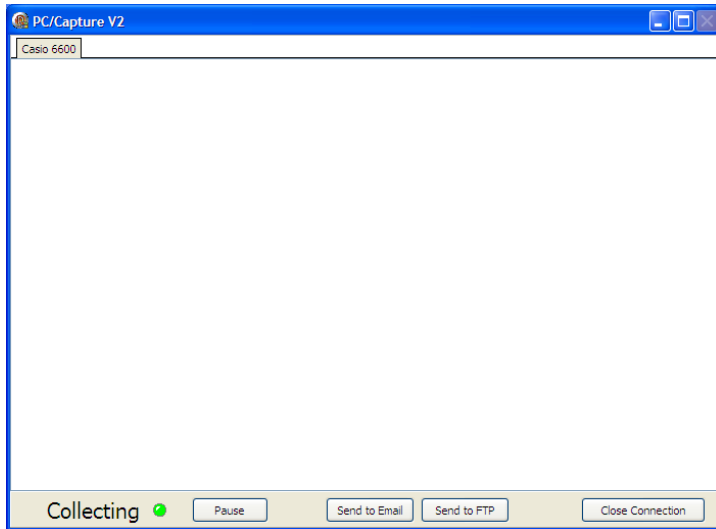
2. The screen above opens. On the **Machines** tab, click the plus sign  button to add a new record.
3. When the user clicks in the **Machine** ID field the software will auto fill with the CRS 3000.



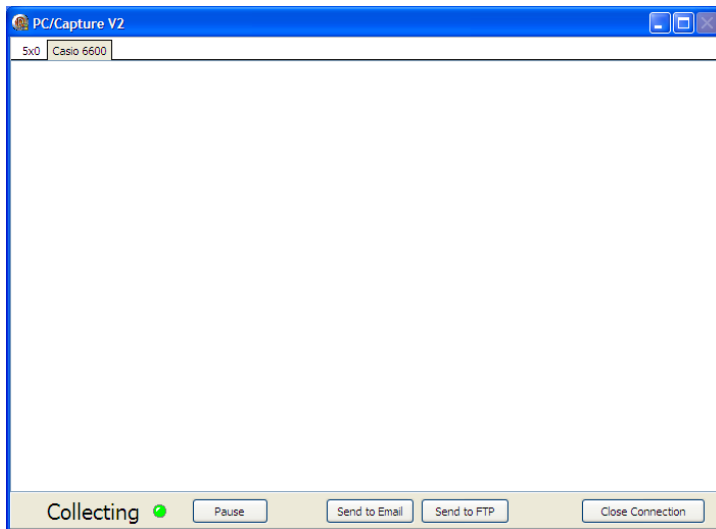
4. Fill in the appropriate information. Note: When finished be sure to click the check mark  to add the record.



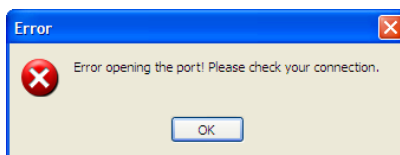
5. To add more machines to the bottom grid, click the plus sign  again.
6. When all machines have been added, click the **Begin Collection** button.



7. The screen above opens as the program starts to collect data from the register.



8. To collect data from multiple machines, highlight the first machine and click the **Begin Collection** button, highlight the second machine then click the **Begin Collection** button and so on until all machines are added. The software will begin collecting the data for the registers, which in this case was the Sam4s 5x0 and the Casio 6600.



9. If the connection to the machine or machines is not setup correctly, the user may get the error above. Check the connection and try again.

The setup screen on the **Machines** tab offers the following options:

**Auto Start this Machine** This option allows the user to setup one or more machines to automatically start collecting data when the software is opened.

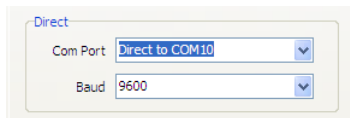
**Machine ID** This is the identifier for the machine that is currently selected. It must be unique.

**MFG** This is the ECR manufacturer of the current machine.

**Model** The model of the current machine.

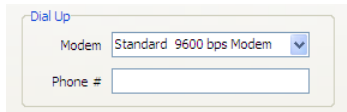
**Comm Type** This determines the form of communication between the ECR and the PC. All registers support Direct and Dial Up communication. A few registers also support TCP/IP. Additional Comm options are listed below.

## Direct Connect Options



**Com Port** This is the Comm port to use for communications. Only valid comm. ports will appear in this list.

**Baud Rate** This drop down menu allows the user to set the Baud rate. It must match the setting of the register.

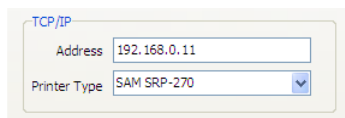


## Dial Up Options

**Modem** This is the modem to use for communications. Only valid modems will appear in this list. *Note: The baud rate must be 9600 on both the modem and the register.*

**Phone #** This is the remote phone # for the ECR.

## TCP/IP Options

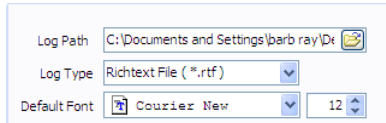


**Address** This is the remote address for the register.

**Printer Type**  
register.

This is the printer type to be emulated. It must match the setting at the

## Log Options



Log Path: C:\Documents and Settings\barb ray\Di  
Log Type: Richtext File (\*.rtf)  
Default Font: Courier New, 12

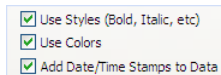
**Log Path**  
stored in.

This controls which directory the PC/Capture's log files for this machine are

**Log Type**

You can choose to store log files as plain text (No formatting) or Rich Text.

## Other Options



Use Styles (Bold, Italic, etc)  
 Use Colors  
 Add Date/Time Stamps to Data

**Default Font**

This controls the font that PC/Capture writes the log file with. Note that this option is only effective if the log type is set to Rich Text File.

**Use Styles**

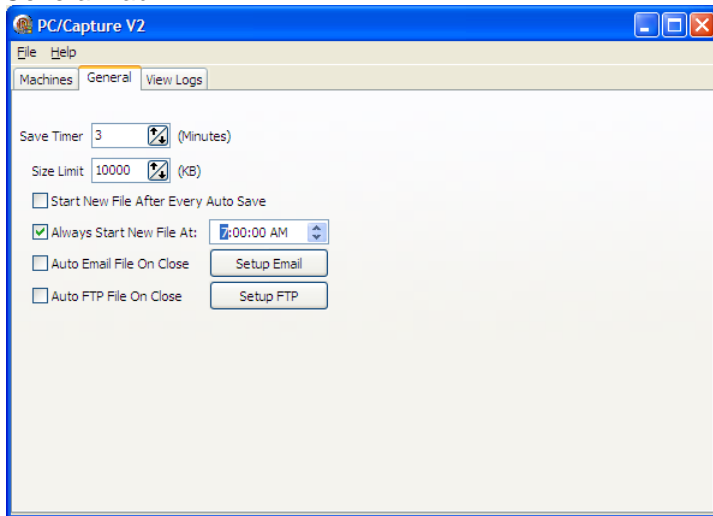
This controls whether or not PC/Capture will save Stylistic data sent from the register or discard it. Examples would be whether certain letters are bolded or underlined. Note that this option is only effective if the log type is set to Rich Text File.

**Use Colors**


This controls whether or not PC/Capture will save color data sent from the register or discard it. Examples would be whether certain letters are black or red. Note that this option is only effective if the log type is set to Rich Text File.

**Add Date/Time Stamp to Data** This adds a date/time stamp to each Divider. Note that dividers are printed when the register sends a "Cut" command. If the register is not set to send "Cut" commands, then no dividers and thus no Date/Time stamps will be printed.

## General Tab



10. Click on the **General** tab for more setup options.

11. Enter the appropriate **Save Timer** value in minutes as well as the (File) **Size Limit**. Type a value in these entry boxes or use the up and down arrows  to increase or decrease the values.

**Save Timer** This controls how often PC/Capture saves its log files to disk. Log files will always be saved when the program is closed.

**Size Limit** When the program saves its log file, it will check to see if it is above the size limit. If it is, a new log file will be started.

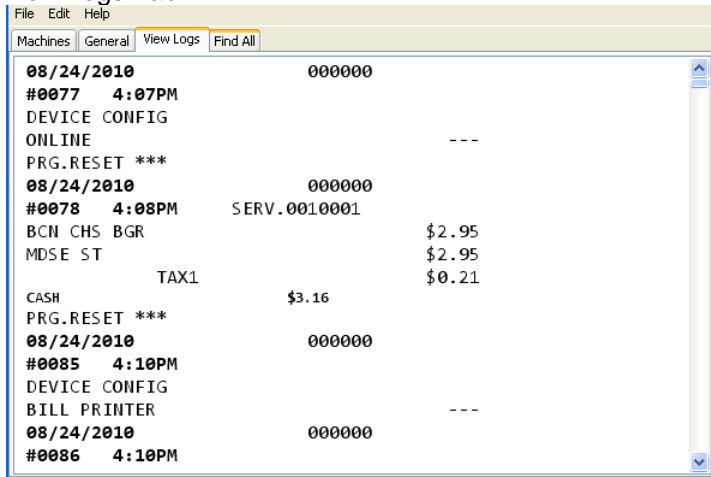
**Start New File After Every Auto Save** This option allows the user to save data to a new file after each auto save.

**Always Start New File At:** When the program saves its log file, it will check whether the set time has been passed. If it has, a new log file will be started.

**Auto Email on Close** When a new log file is created, this will email the old one to a set address.

**Auto FTP File on Close** When a new log file is created, this will send the old one to an FTP site.

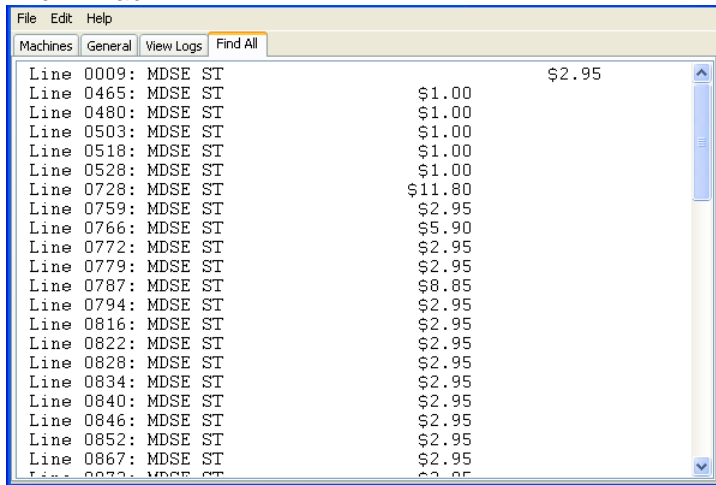
## View Logs Tab



This area allows the user to open and view previously saved log files. The user can search these log files if they wish.

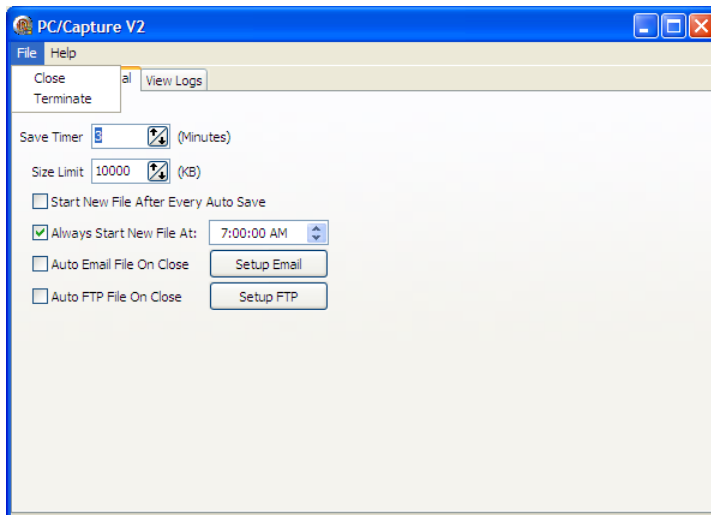
The **Find All** option under the **Edit** menu allows the user to display all instances of a particular search phrase. It is shown below.

## Find All Tab



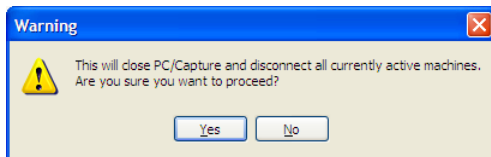
Double clicking on a line will take the user back to the original log, at the position of the clicked line.

## File Menu

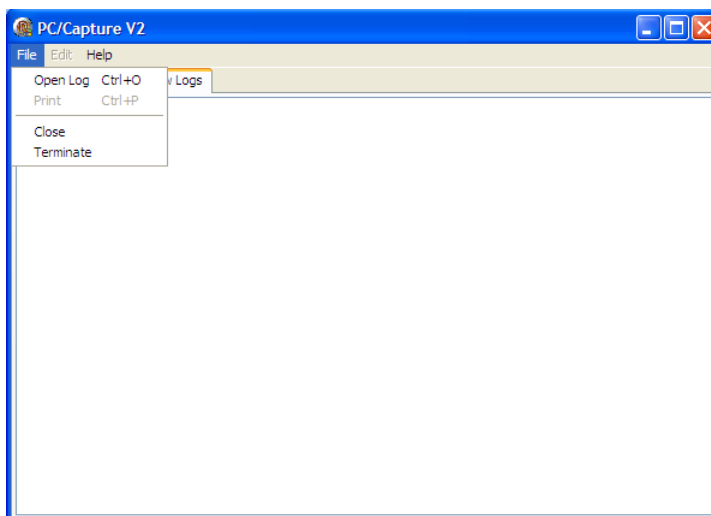


The drop down menu at the top of the screen has two options on the **Machines** and **General** tab:

**Close** This menu item closes the software.

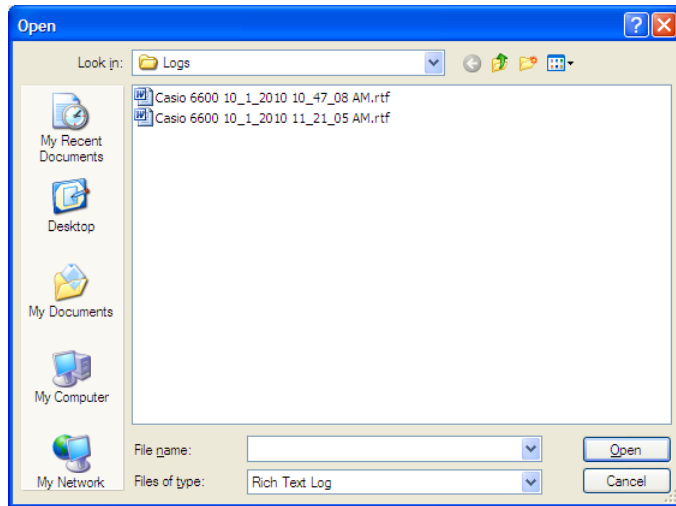


**Terminate** Clicking the Terminate menu item will open the warning screen above. This will close PC/Capture and disconnect all currently active machines.





On the **View Log** tab, the File menu item has two addition items.



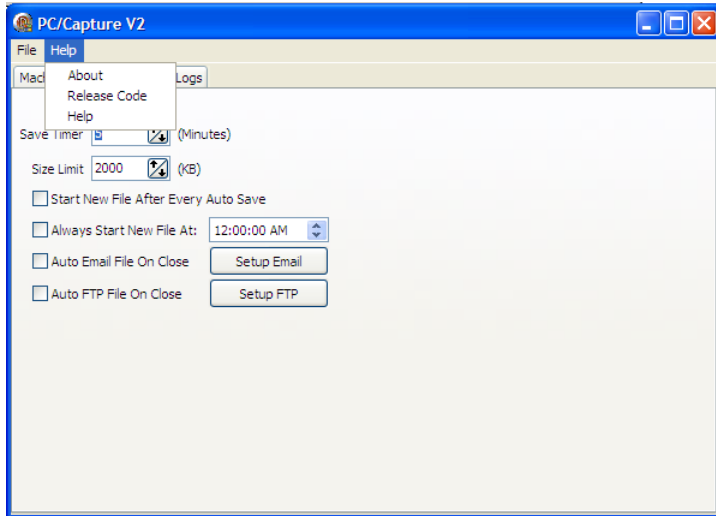
**Open Log**  
a machine log.

This option will open a Open screen allowing the user to browse for and pick

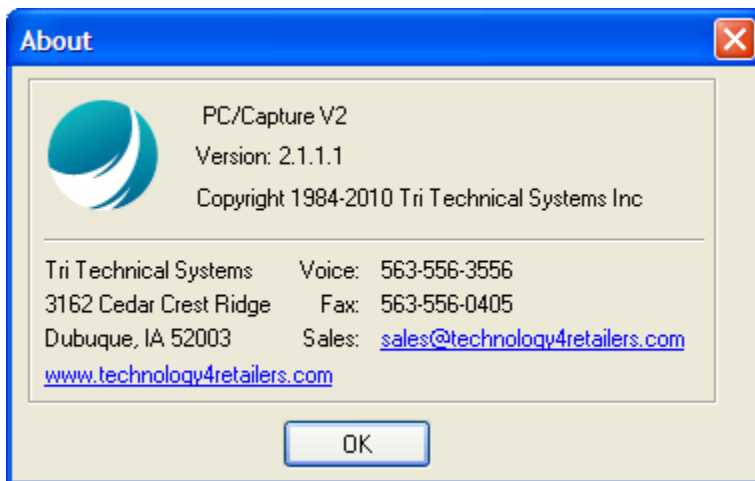
**Print**

The **Print** option allows the user to print a copy of the selected log file.

## Help Menu



The Help Menu has the following three items:



**About** The **About** screen displays the name of the program, the version of the installed software, and contact information for Tri-Technical Systems. To close the screen click **OK**.

**QuickBooks Interface V3 Release Code**

To obtain a release code you must contact your dealer or PC/POLL SYSTEMS. You may call 563-556-2323 or EMAIL SALES@technology4retailers.COM or fax us at 563-556-0405. You need to provide the Machine Identification displayed below. If you are Emailing or faxing be sure and provide complete contact information.

Machine Identification	68554B3C
Code Version Date	Oct 1, 2010
Date Range	
Machines	
Serial Number	
Release Code	

Update Release Code    ? Help    Close

Before using this software please review our on-line documentation. Some hardware setup may be required prior to using this software.

Thank You!

Online Resources:  
<http://www.technology4retailers.com/t-ppollappendices.aspx>  
<http://www.technology4retailers.com/t-ppollbrochures.aspx>

**Release Code**                      This screen is used to enter the Release Code for the software in the red box. Once the Release Code is entered and the **Update Release Code** button is clicked, the software will become active and the Date Range, Machines, and Serial Number fields will fill in once.

**Help**                                      The **Help** menu item opens the Help Files.

## Live Capture Window

Sx0    **Casio 6600**

```

FOOD MARKET
REG  LU   09-30-2010 13:56   MC #01   000386
1 DISCOUNT                -89.65
  CANCEL

*---9/30/2010 12:44:54 PM---*
*-----*
FOOD MARKET
REG  LU   09-30-2010 13:56   MC #01   000387
1 DELI/FOUNTAIN             $9.99
1 DISCOUNT                 -63.58
1 TOB/CIGS                   $60.00
                               3 No
TX1                           $4.90
TL                            $11.31
CASH                          $11.31

NO REFUNDS!
EXCHANGES ONLY

```

Collecting ●    Pause    Send to Email    Send to FTP    Close Connection

The user can have multiple machines collecting data at the same time. They can switch the current view by clicking on a tab at the top of the screen (in the red box).

With the buttons at the bottom of the screen, the user can do the following:

**Pause**                                      The **Pause** button will to pause the operation. Click the button a second time to restart it.

**Send to Email**                              This button will send an email with the data to an email address.

**Send to FTP**                                      Uploading the data to a FTP site can be done with this button at anytime from this window.

## Individual ECR Setup Instructions

### **Casio 6x00**

PC/Capture can be used as a receipt printer, a report printer, and/or an order printer.

#### *Direct or Modem:*

1. -Connect the printer cable to a port.
2. Under I/O Parameters, set item 4 to 'X103', where X is the port number the printer cable is connected to. (Port 4 is recommended if available)

#### *TCP/IP:*

1. Go to TCP/IP in the register and setup a printer. (Parameter 11 is TCP/IP printer 1.)
2. The rightmost number is the IP Address.

Setup the printer connection table as you choose.

### **Casio 7000/8500:**

PC/Capture can be used as a report printer, and/or an order printer. It cannot be used it as a receipt printer. (This is a register limitation)

1. Connect Printer Cable to Port 4.
2. Under I/O Parameters, set item 4 to '4103'

Setup the printer connection table as you choose.

### **CRS 3000**

PC/Capture can be used for all printer types on the CRS 3000.

1. Connect to port 2.
2. Use Printer type 3.

### **Sharp 8x0**

PC/Capture can be used as an External journal printer, a Bill printer, or a report printer. It cannot be used it as a receipt printer. (This is a register limitation)

1. More than one of the listed functions cannot assign to the same printer.
2. Select TM-T88(3)/T-88(4) as the printer type.

### **Sharp 3500**

PC/Capture can be used as any type of printer on the sharp 3500. (Receipt, journal, Report, Bill, KP)

1. Make sure to select "TM-T85/T88(3)/T88 mark4" as the printer type.
2. Turn on Auto Cutter in order to see dividers.

### **Sharp 600/700**

PC/Capture can be used as a Report and/or Bill printer on the sharp 600/700

1. Make sure to select "TM-T88/T85" as the printer type.
2. Turn on Auto Cutter in order to see dividers.

### **Sharp 330x**

PC/Capture can be used as any type of printer on the sharp 3300/3301. (Receipt, journal, Report, Bill)

1. Make sure to select "EPSON TM-T85" as the printer type.
2. Turn on Auto Cutter in order to see dividers.

### **Sharp 750/770**

PC/Capture can be used as any type of printer on the sharp 750/770. (Receipt, journal, Report, Bill)

1. -Make sure to select "EPSON TM-T85" as the printer type.

2. Turn on Auto Cutter in order to see dividers.

#### **Sam4s 5x0/2000/1000**

##### *Direct Connect/Modem:*

1. Select EPSON T88-2 as the printer type.
2. Select 9600 Baud.
3. Turn on "Cutting after printing" in order to see dividers.
4. "Batch" type printer operation is recommended.

##### *TCP/IP: (5x0/2000 ONLY)*

1. Select 115200 Baud
2. Turn on "Cutting after printing" in order to see dividers.

#### **Sam4s 70x0**

1. Select EPSON T90 as the printer type.
2. Turn on "Cutting after printing" in order to see dividers,
3. "Batch" type printer operation is recommended.

#### **Sam4s 65x0/65x0 II**

1. Go to PGM->60
2. X is 5 for port 1 and 6 for port 2, 7 for port 3, 8 for port 4
3. X0 = 2 (9600 Baud)
4. X3 = 8 (Port is Journal Echo) OR X3 = 2 (Remote Report Printer)
5. X5 = 3 (TM-T85)
6. This register does not seem to support auto cutters, so there will be no dividers.

#### **Sam4s 52xx/52xxM/28x**

1. Go to S Mode.
2. Pgm 80 for port 1, 81 for port 2
3. X is 5 for port 1 and 6 for port 2, 7 for port 3, 8 for port 4
4. 1 = 0 (9600 Baud)
5. 5 = 3 (Port is Remote Journal) OR 5 = 4 (Remote Printer)
6. 11 = 8 (TM-T88-2)
7. This register does not seem to support auto cutters, so there will be no dividers.

#### **Sam4s 6xx**

1. Select RJ or RP for port function.
2. Select the "EPSON TM-T88-2" as the printer type.

#### **AIMsi**

Use the settings for an EPSON serial printer.